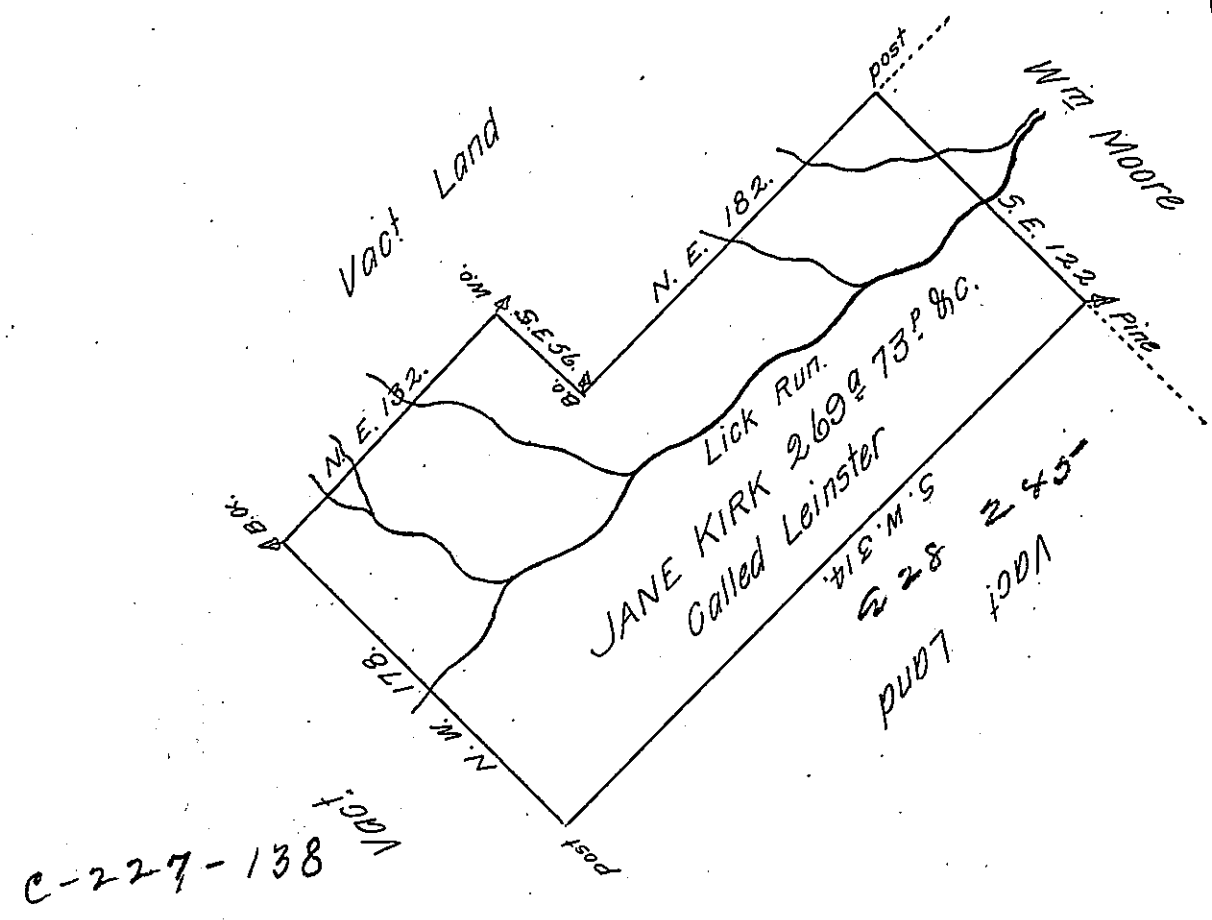


Pg 231



A Draught of a Tract of Land Called Leinster Situate on the South side of
 the Bald Eagle Mountain in the County of Cumberland Surveyed the 4th day
 of Novem^r. 1769 to Jane Kirk Inpursuance of her Order of Survey N^o 3821
 Dated the 31st day of Augt. 1769 Containing Two hundred & sixty nine acres
 & Seventy three perches & allowance of 6^a P. Cent & C^a
 now Lycoming County

To John Lukens Esq^r Chas Lukens D.S.
 Surveyor General.

IN TESTIMONY that the above is a copy of the original remaining on file in
 the Department of Internal Affairs of Pennsylvania, made
 conformably to an Act of Assembly approved the 16th day of
 February, 1833, I have hereunto set my Hand and caused
 the Seal of said Department to be affixed at Harrisburg,
 this eighteenth day of December 1906.

Geo. P. Brown
 Secretary of Internal Affairs.